

Aggressive Environment

Lower Kopili HE Project Assam



of the 2 days Training Course on Role of SCM in providing Case Specific Solution for River



Khandong Dam – Spillway view



downstream face of Khandong Dam

the 2 days Training Course on Role of SCM in providing Case Specific Solution for River Val-20210825 0538-1



01:28:48

Mineral admixture

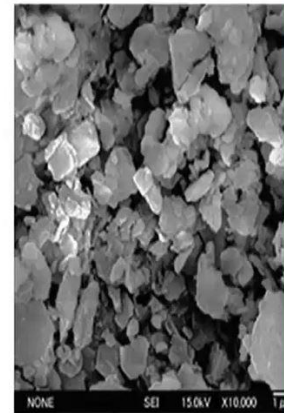
- To describe the wide variety of materials that are commonly added to concrete to increase the paste content of the mixture.
- These same materials are now be called as “supplementary cementitious materials (SCMs)”.
- This change was needed because the ASTM Subcommittee on Terminology (C09.90) could not reach a consensus on an adequate definition of the term “mineral admixture”.

of the 2 days Training Course on Role of SCM in providing Case Specific Solution for Riv

Ground Granulated Blast Furnace Slag

- GGBS (Ground Granulated Blast-furnace Slag) is a cementitious material.
- By-product from the blast-furnaces used to make iron. Slag is usually a **mixture of metal oxides and silicon dioxide**.

- Conforming to IS:12089
- The manufacture of GGBS requires less than 20% of the energy and produces less than 10% of the **CO₂ emissions compared to Portland Cement production.**



Microstructure of blast furnace slag through field emission scanning electron microscope (FESEM) showing particle size distribution

of the 2 days Training Course on Role of SCM in providing Case Specific Solution for Riv